

Introducing
Smart BTU

Smart BTU

Product Introduction

CAS

WE WEIGH THE WORLD

CONTENTS

Summary About Smart BTU
Incheon Airport Smart BTU Progress
Location and Quantity of Smart BTU Installation
at Incheon Airport

Features Hardware Specifications
Hardware-application
Comparison to Existing Airport Scales
Service Platform Structure
Major Features
Measure Baggage and Determine Suitability

Advertisement Content Compilation Report Function
Seamless Play Specialization

Operating System Operations Control System Dashboard
System Monitoring

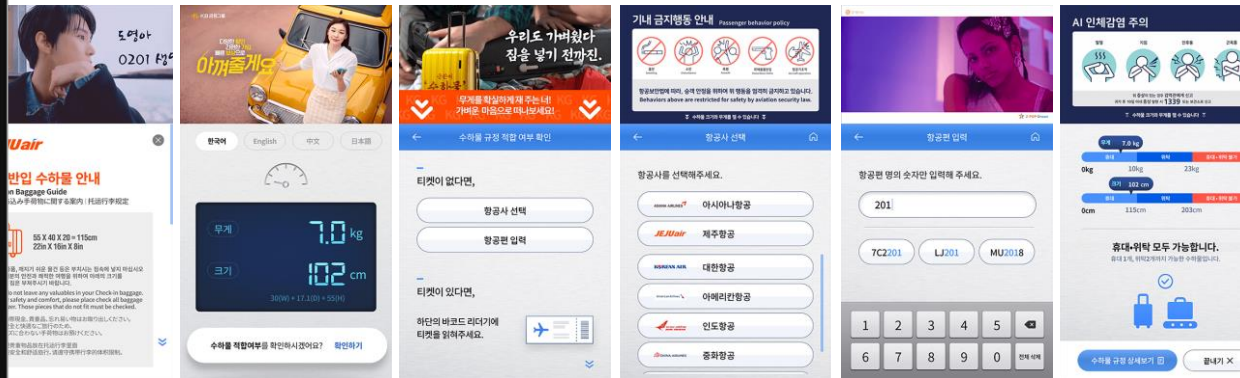
Photo

What is Smart BTU?

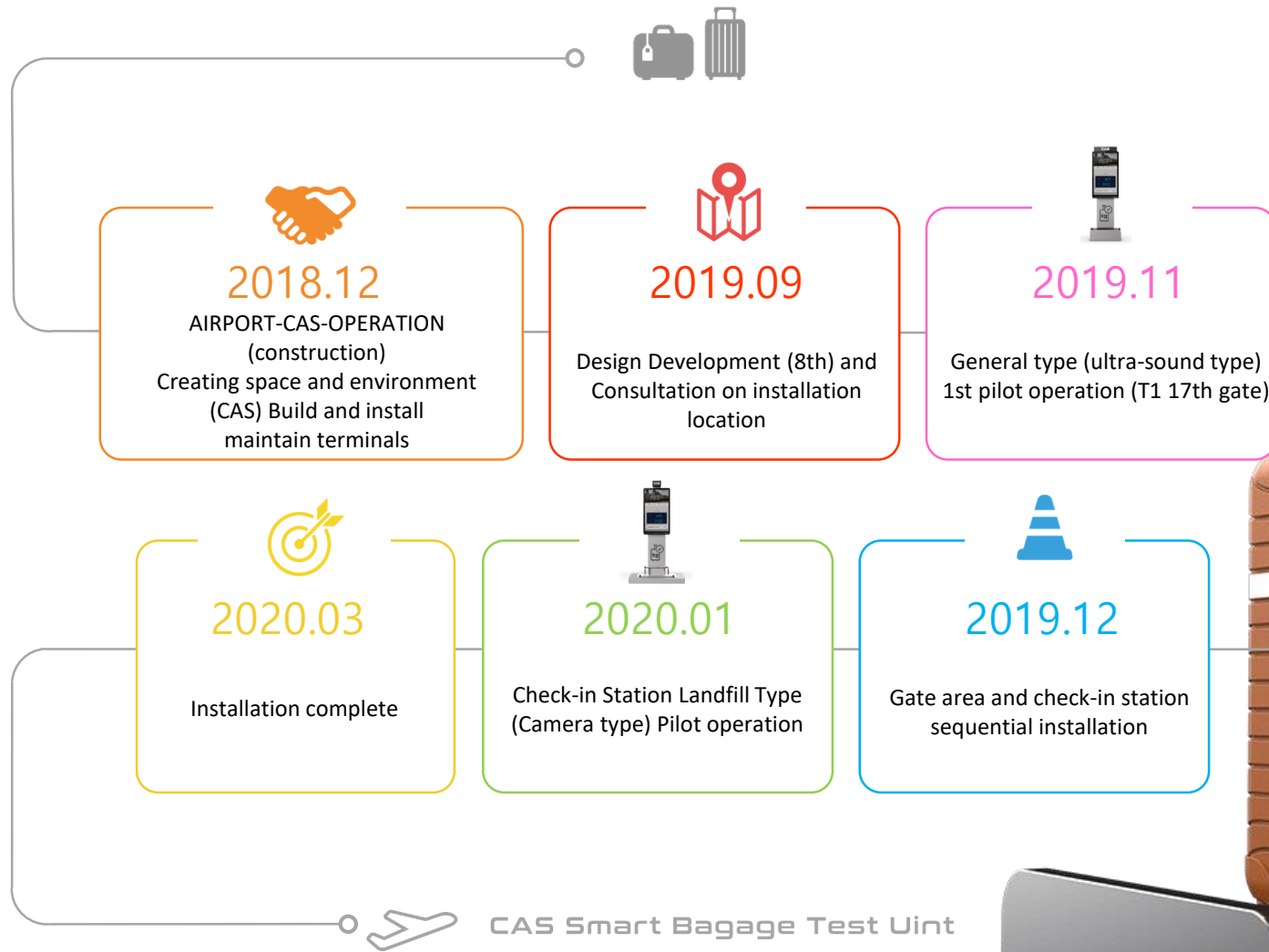
(Smart Baggage Test Unit)

Measuring weight and size of luggage in real time by using digital scales and measuring the volume sensors. Smart device platform that determines whether an item is portable or consigned - in accordance with airline regulations – and for the first time in the world, a Smart broadcasting channel that organizes, sends and operates various contents and services to passengers via display.

Market Demand: airports, city terminals, railways, ports, large hotel chains, etc.



History of Incheon Airport Installation



Total 206 Sets

(Location and Quantity are partially variable by Adjustment)

Gate area, exit area, outside entrance



ULTRASONIC
VOLUME TYPE

Basic(Ultrasonic)

121 sets

Check-in counter, baggage repackaging zone,
Luggage receiving area, transportation center, etc.



3D CAMERA
VOLUME TYPE

3D CAMERA

85 sets

HARD WARE SPECIFICATION

Checks baggage weight and size at the same time. Identification according to baggage regulations by airlines (carriage of passengers, consignment)
Supported in four languages (Korea, Young, China, Japan). User-friendly design

ULTRASONIC
VOLUME TYPE

3D CAMERA
VOLUME TYPE


- SPECIFICATION -

GATE (ULTRASONIC)		CHECK-IN (3D CAMERA)
Custom O/X determinant by Airlines	Function	Custom O/X determinant by Airlines
BTU5240-150-435U	Model	BTU7040-200-435C
Max 150 kg	Weight measurement range	Max 200 kg
640(W) x 605(D) x 2,077(H) mm	Size measurement range	860(W) x 832(D) x 2,122(H) mm
Ultrasonic sensor (6pcs)	Sensor Type	3D Camera sensor (lens 7pcs)
4 languages (KO, CH, JP, EN)	Language	4 languages (KO, CH, JP, EN)
43" UHD Touch Screen	Display	43" UHD Touch Screen
Barcode scan, QR code scan	Scanner	Barcode scan, QR code scan
In-flight baggage by airline upon check-in Static and articulate regulations to conduct guidance	etc	No break with buried (90mm) floor on the scale (You can push and measure without lifting the carrier.)






Ultrasonic Sensor



Measure the distance between the sensor and the object through six sensors and calculate the volume of the object through that distance.

Camera Sensor



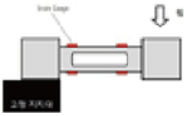
Measurement of distance by identifying repeated molding patterns and locations. The camera 3D information value is separated from the object through image processing.

Volume Measuring



Weight Measuring


Loadcell Sensor



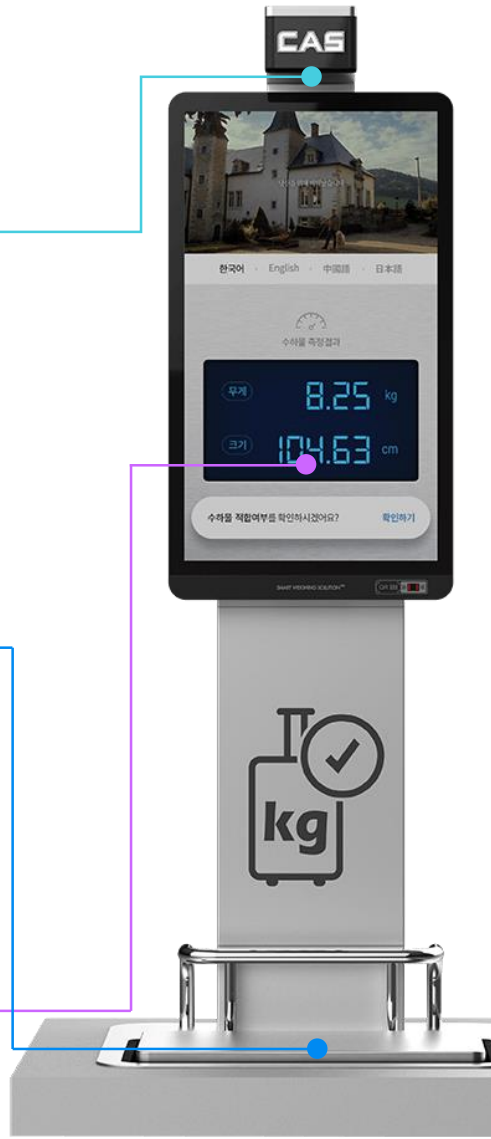
Measurement of the force applied to the weight sensor (load cell/load cell) by a precise electronic circuit. Measure the weight with a self-made weight sensor and instrument







Baggage Identification



The suitability of baggage information (weight, size and number of luggage allowed by destination) per pre-registered service class is determined through the program. You can check whether baggage is in compliance with airline regulations in a variety of ways, including airline selection, flight entry, and ticket barcode tagging.



Compare to existing airport scales

	Before		After	
	Airline's scale	Public Scale	Gate (Ultrasonic)	Check-In (Camera)
Image				
Operating	Airline Specific In-flight Luggage in disagreement with the rules of acceptance Use of individual productions, Left in a public area	Simple Weight Scale Only Unable to verify airline regulations or specifications	Installation at gate Airline baggage without movement verification of regulations Simultaneous weight and size measurements; and Airline regulations can be checked baggage by airline upon check-in regulation mark	Installation in departure area and checks weight and size before boarding and airline regulations No gap between the scale and the floor. Push to measure.
Use	It is difficult to measure the size by lifting it and placing it in a frame.	Weight can only be measured, airline regulations cannot be verified, and weight cannot be measured by lifting heavy loads as there is a gap with floor.		
Loading line	Check individual baggage by airline scale at the beginning of check-in. 30m to 40m queue at all times		The public smart baggage balance removes queue by checking weight, specifications, and airline regulations of the luggage in advance.	
Design	Airline-specific scales are left in the waterfront, preventing passenger traffic and obstructing the appearance		Integrated operation with public smart baggage balance to improve appearance Produce high-quality content in a 43-inch UHD	
Baggage rules	Different baggage regulations by airline/class/arrival and Charging system makes it difficult for passengers to check		Airline will recognize boarding pass on Smart Baggage Scale or decipher whether baggage is consigned or not, and whether or not carry-on is possible	
For Airlines	Trouble with moving scales every time a passenger transfers to different gate		No need to relocate scale	

Provide various smart contents with baggage metering and measurement
New Media Platform Delivers Convenience and Pleasure to Customers



Smart metering and measurement service platform



A New Business Model Combining Advanced Metrics Technology with Internet, IoT and Data
Kiosk + Digital Signage + Weighing Platform with volumetric sensing
Incheon Airport - > Domestic Airport - > Airport Railroad, City Airport - > Global Airport Implementation
(Global airports can sell hardware + yearly licenses, maintenance cost models)

Hardware

Hardware (weight-volume, including set-top),
Control solutions, configuring operating systems
Built-in high-performance PC-class set-top box
Hardware Components modular fitment

Service Content

advertising, information, discount coupons, etc.
Delivering a variety of services
Information Downloads, Augmented Reality Selfie et al
Pat, Kids, Cooking, etc.
Benefits and Pleasures from Services

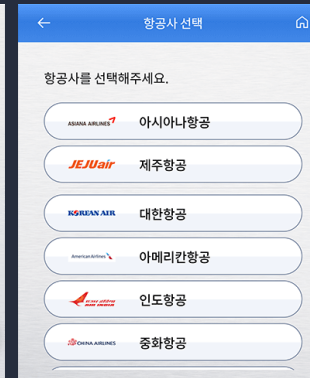
Operation

Details of Content, data collection
Functional Error Real-Time Alarm Transmission
All screen connections or sequential exposures possibility
Digital shows, space events, etc.

Baggage Measurement and Suitability Determination



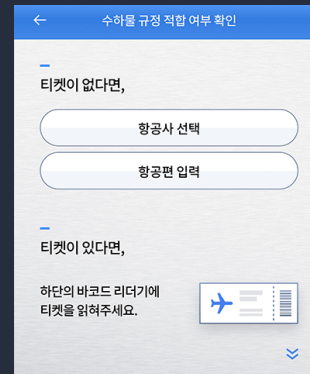
1. Result



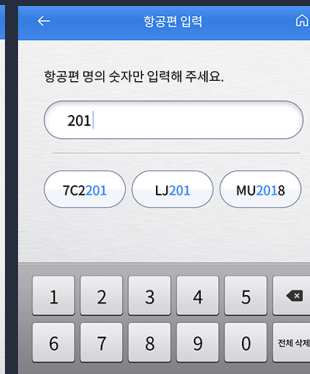
3. Select Airline



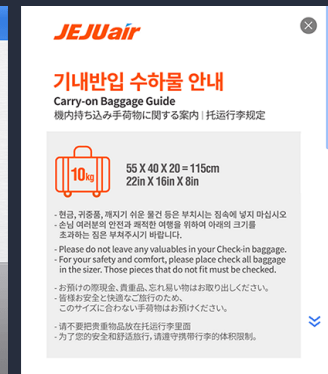
5. Consign on the go



2. Check for suitability



4. Enter flight name



6. Baggage rules

Present Various Contents advertisement promotion video, and analysis report output

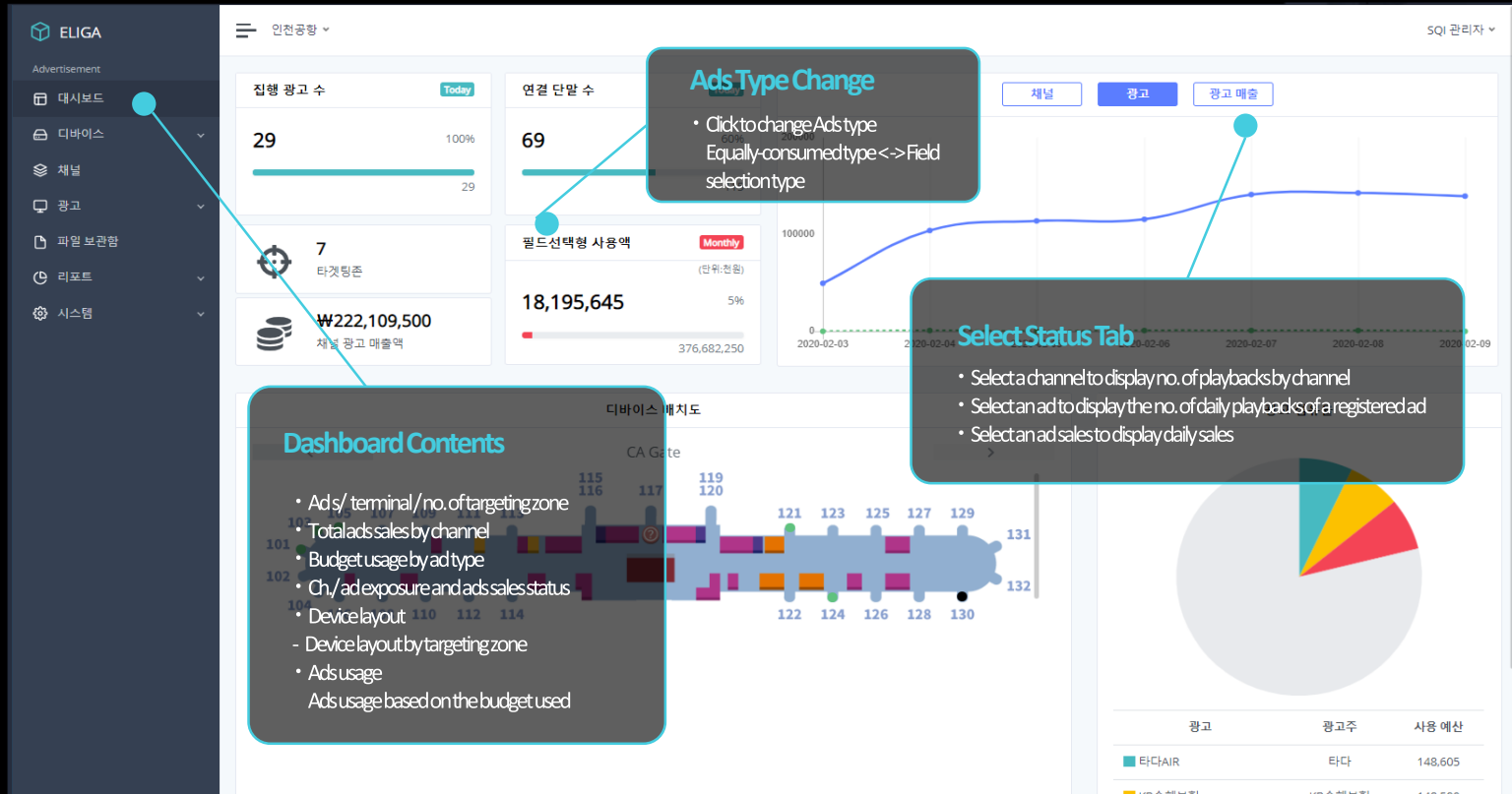


If Smart BTU has no luggage, the **longitudinal image** is displayed. When load is lifted and measured, the image is displayed **horizontally**.



- Without Baggage -

- With Baggage -



The screenshot displays the ELIGA system monitoring dashboard. The interface includes a sidebar menu on the left with options like 'Advertisement', '대시보드', '디바이스', 'ALL', 'SQISOFT 카페', 'T1 Gate', 'T1 Check In', 'CA Gate', 'T2 Gate', 'T2 Check In', 'Test', '채널', '광고', '파일 보관함', '리포트', and '시스템'. The main content area is titled '디바이스 > ALL' and shows a table of devices with columns for checkboxes, target zones, device IDs, names, OS types, status indicators, monitoring icons, and connection times. Three callout boxes provide details on specific features:

- Device Remote Control**
 - Reboot
 - Power On , Off
 - Terminal storage cleanup
 - Register / deactivate announcement
- Conditional Query**
 - Bykeyword
 - Click "Connect/Disconnect" tab
- Device List**
 - Total list or list by target zone
 - Device details
- Real-Time Monitoring**
 - Screenshot Collage
 - View last-connected session
 - Monitor current screen

타겟팅존 관리	다시 연결 On	전원 Off	단종형식	공급	모니터링	켜짐	꺼짐	마지막 연결시간	Storage	RAM	상세보기
타겟팅존	디바이스ID	타겟팅존	디바이스명	OS	모니터링	켜짐	꺼짐	마지막 연결시간	Storage	RAM	상세보기
CA Gate	ICNCAGA-1101	CA - Gate 101	WINDOWS	●	모니터링	01:50	01:00	2020-02-10 17:53:04	21GB / 122GB	38%	상세보기
CA Gate	ICNCAGA-1102	합승동 게이트	WINDOWS	●	모니터링						상세보기
CA Gate	ICNCAGA-1103	CA - Gate 103	WINDOWS	●	모니터링	01:50	01:00	2020-02-10 17:53:04	21GB / 122GB	38%	상세보기
CA Gate	ICNCAGA-1104	합승동 게이트	WINDOWS	●	모니터링						상세보기
CA Gate	ICNCAGA-1105	CA - Gate 105	WINDOWS	●	모니터링	01:50	01:00	2020-02-10 17:53:04	21GB / 122GB	37%	상세보기
CA Gate	ICNCAGA-1106	합승동 게이트	WINDOWS	●	모니터링						상세보기
CA Gate	ICNCAGA-1107	합승동 게이트	WINDOWS	●	모니터링						상세보기
CA Gate	ICNCAGA-1108	합승동 게이트	WINDOWS	●	모니터링						상세보기
CA Gate	ICNCAGA-1109	합승동 게이트	WINDOWS	●	모니터링						상세보기
CA Gate	ICNCAGA-1110	합승동 게이트	WINDOWS	●	모니터링						상세보기

The screenshot displays the ELIGA web interface. On the left is a dark sidebar with navigation items: ELIGA, Advertisement, 대시보드, 디바이스, ALL, SQISOFT 카페, T1 Gate, T1 Check In, CA Gate, T2 Gate, T2 Check In, Test, 채널, 광고, 파일 보관함, 리포트, and 시스템. The main content area is titled '인원공황' and 'SQ 관리자'. It features a '디바이스 상세 현황' section with tabs for '기본 정보', '디바이스 상태', '부가 정보', '원격 관리 정보' (highlighted), and '기타 정보'. Below these are '취소하기' and '수정하기' buttons. The '원격 관리 정보' section includes '원격 관리 정보' with fields for '마지막 켜짐 시간' (2020-02-10 01:50:15), '마지막 꺼짐 시간' (2020-02-10 01:00:26), '자동 켜짐 시간' (01 시 50 분), '자동 꺼짐 시간' (01 시 00 분), '자동 재부팅 시간' (사용), and '공휴일 꺼짐 설정' (2020-02-10). There are also '추가' and '삭제' buttons. Two callout boxes provide details: 'Remote Management' lists 'Configure auto boot / auto off', 'Configure auto reboot', and 'Configure auto off on Holiday / weekend / day(s) of the week'. 'Device Info and Status' lists 'View and configure basic info such as Device ID, Device Name, Device Type', 'View device status' (with sub-points for storage info, volume, and screenshots), and 'Misc.' (with sub-points for monitoring intervals and alarms).

Ads-by-Type Management System

ELIGA

Advertisement

- 대시보드
- 디바이스
- 채널
- 광고
- 광고 리스트
- 파일 보관함
- 리포트
- 시스템

인전공항
SQL 관리자

광고 > 광고 리스트

Ads Mgmt by Channel

- Register ads in preferred channels

Detailed Query

- Enhanced query through segmentation of properties

전체 73
대기 2
진행 28
종료 43

페이지당 10 개씩 보기

전체 검색어 입력 검색

NO	상태	채널	캠페인명	광고주명	대행사명	타입	길이	광고 일정			등록계정	상세보기
								신청	시작	종료		
1	대기	Smart BTU AD CH. Gate	페리티	블링크코퍼레이션	여울애드	필드선택	15s	2020-02-10	2020-02-11	2020-02-29	CAS_Admin	📄
2	대기	Smart BTU AD CH. Check In	페리티	블링크코퍼레이션	여울애드	필드선택	15s	2020-02-10	2020-02-11	2020-02-29	CAS_Admin	📄
3	진행	Smart BTU AD CH. Gate	타다AIR	타다	여울애드	필드선택	15s	2020-02-07	2020-02-08	2020-02-29	CAS_Admin	📄
4	진행	Smart BTU AD CH. Check In	타다AIR	타다	여울애드	필드선택	15s	2020-02-07	2020-02-08	2020-02-29	CAS_Admin	📄
5	진행	Smart BTU AD CH. Gate	어닛	기타	여울애드	필드선택	15s	2020-02-06	2020-02-07	2020-02-29	CAS_Admin	📄
6	진행	Smart BTU AD CH. Gate	해커스톡	해커스	여울애드	필드선택	15s	2020-02-06	2020-02-07	2020-02-29	CAS_Admin	📄
7	진행	Smart BTU AD CH. Check In	어닛	기타	여울애드	필드선택	15s	2020-02-06	2020-02-07	2020-02-29	CAS_Admin	📄
8	진행	Smart BTU AD CH. Check In	해커스톡	해커스	여울애드	필드선택	15s	2020-02-06	2020-02-07	2020-02-29	CAS_Admin	📄
9	진행	Smart BTU AD CH. Check In	레이나모나_운동복	기타	여울애드	필드선택	15s	2020-02-04	2020-02-05	2020-02-29	CAS_Admin	📄
10	진행	Smart BTU AD CH. Gate	아모레퍼시픽_아니스프리	아모레퍼시픽	여울애드	필드선택	15s	2020-02-04	2020-02-05	2020-02-29	CAS_Admin	📄

현재 1 - 10 / 73건

처음 이전 1 2 3 4 5 ... 8 다음 끝

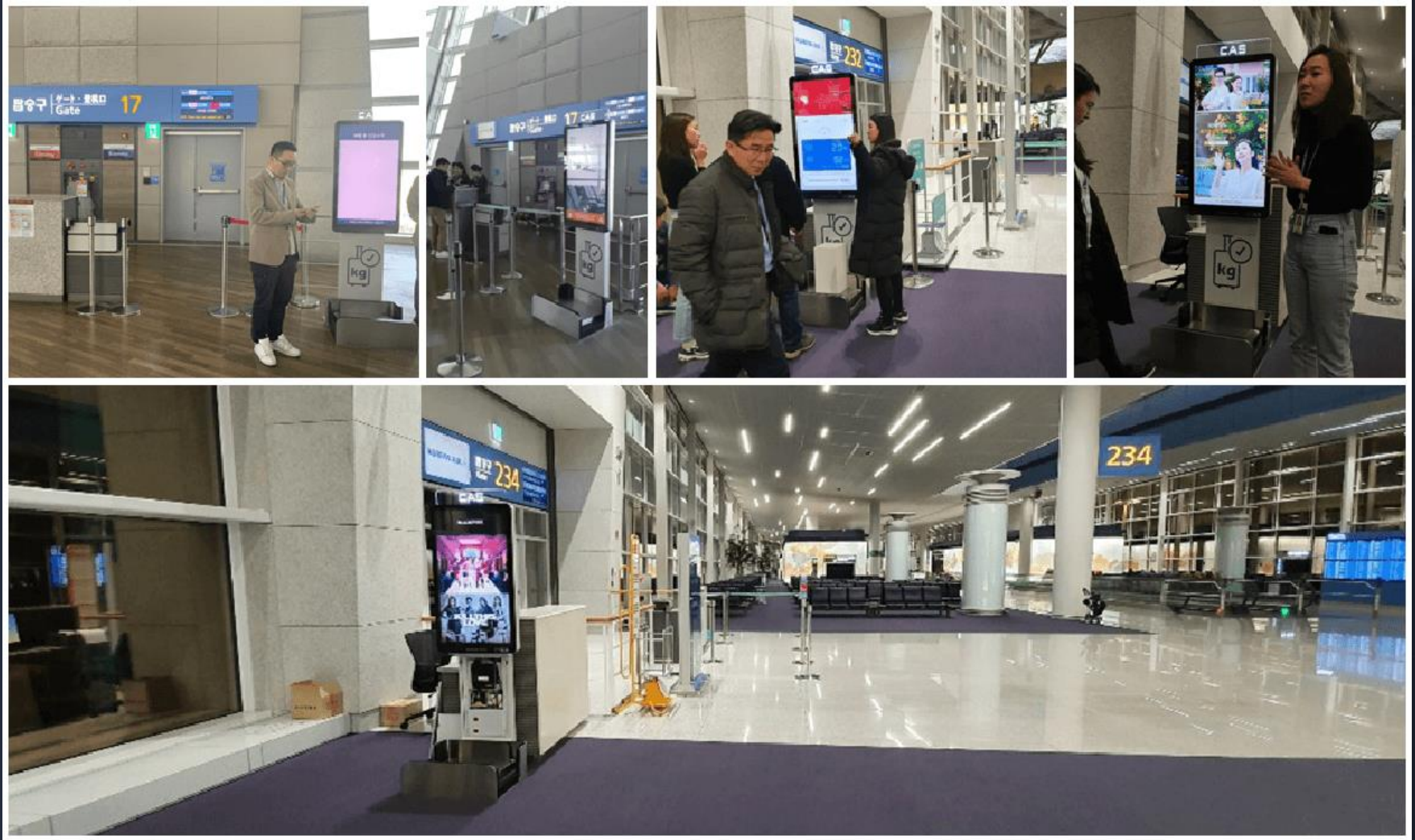
Ads Status

- Display ads status as Standby → Execute → Terminate
- Sort list by status

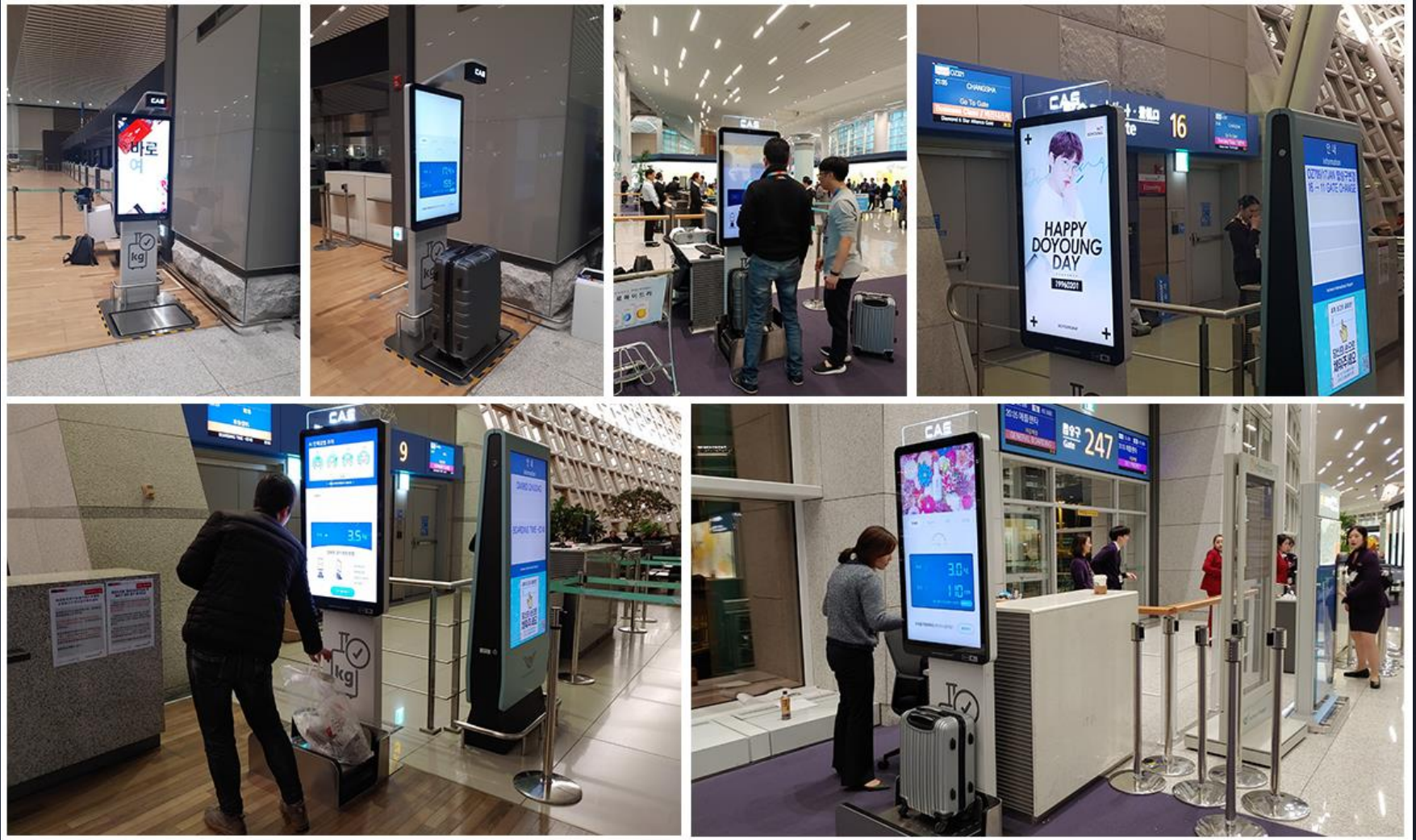
Ads by Type

- Operate various types of ads based on advertising methods
- Field selection type: Guaranteed to play a set no. of play ads under the selected account
- Equally consumed type: Broadcast an ad with the selected amount without playback limits
- Package type: Combine 2-3 ads into a single package and broadcast

Smart BTU in Incheon Airport - 1

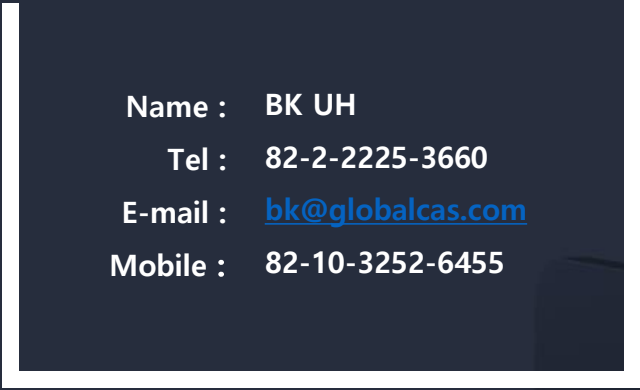


Smart BTU in Incheon Airport - 2





Smart BTU
THANK YOU



Name : BK UH
Tel : 82-2-2225-3660
E-mail : bk@globalcas.com
Mobile : 82-10-3252-6455